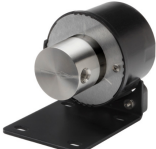
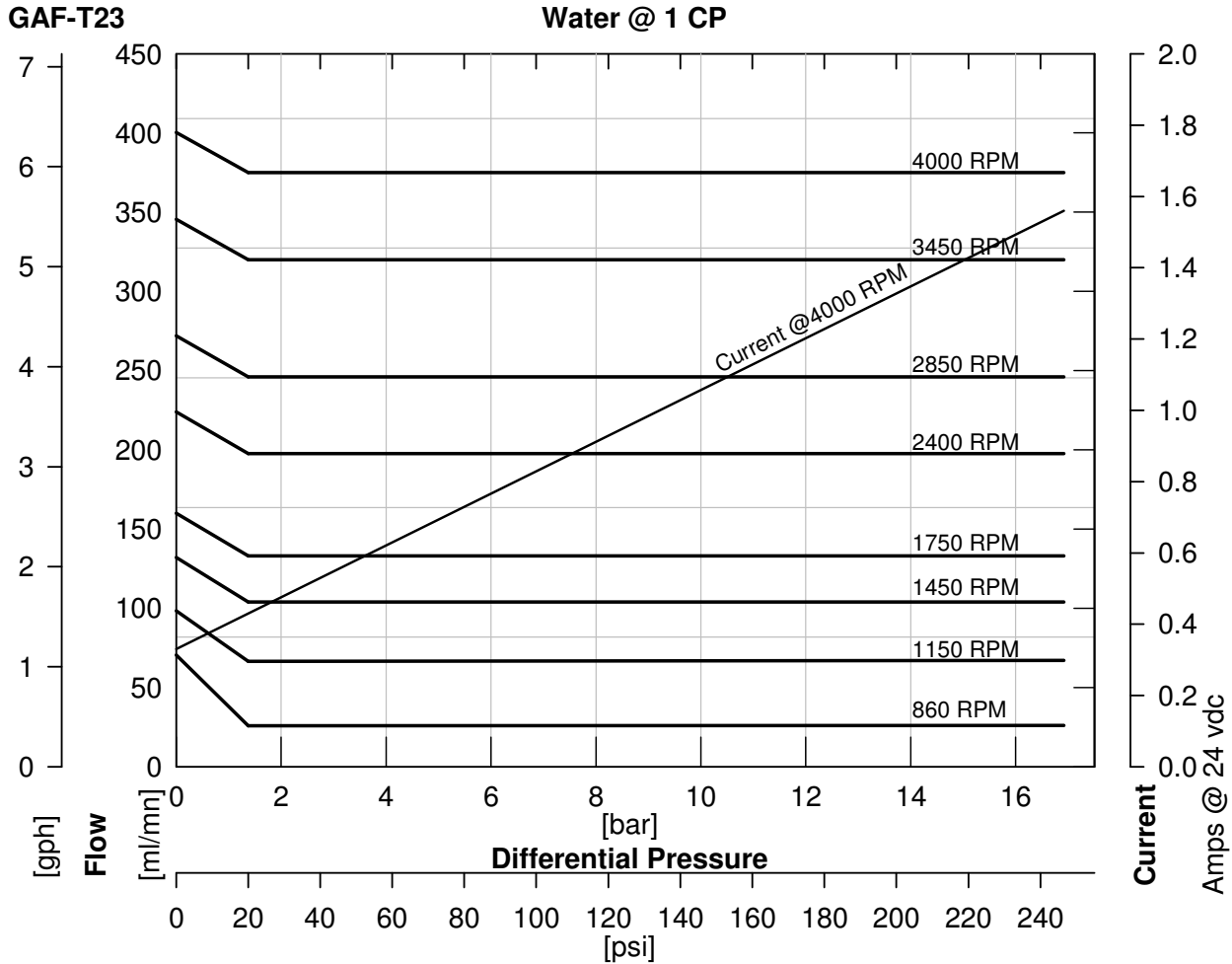


Order Code								Pump Construction	
Base Code		Gear Set		Drive Mount		Options			
G	AF	-	T23			SE			
1	2	3	4	5	6	7	8		
Model				Wetted Materials				O/C: Pump S/K: Service Kit	

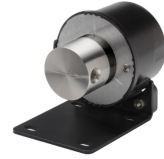
Performance



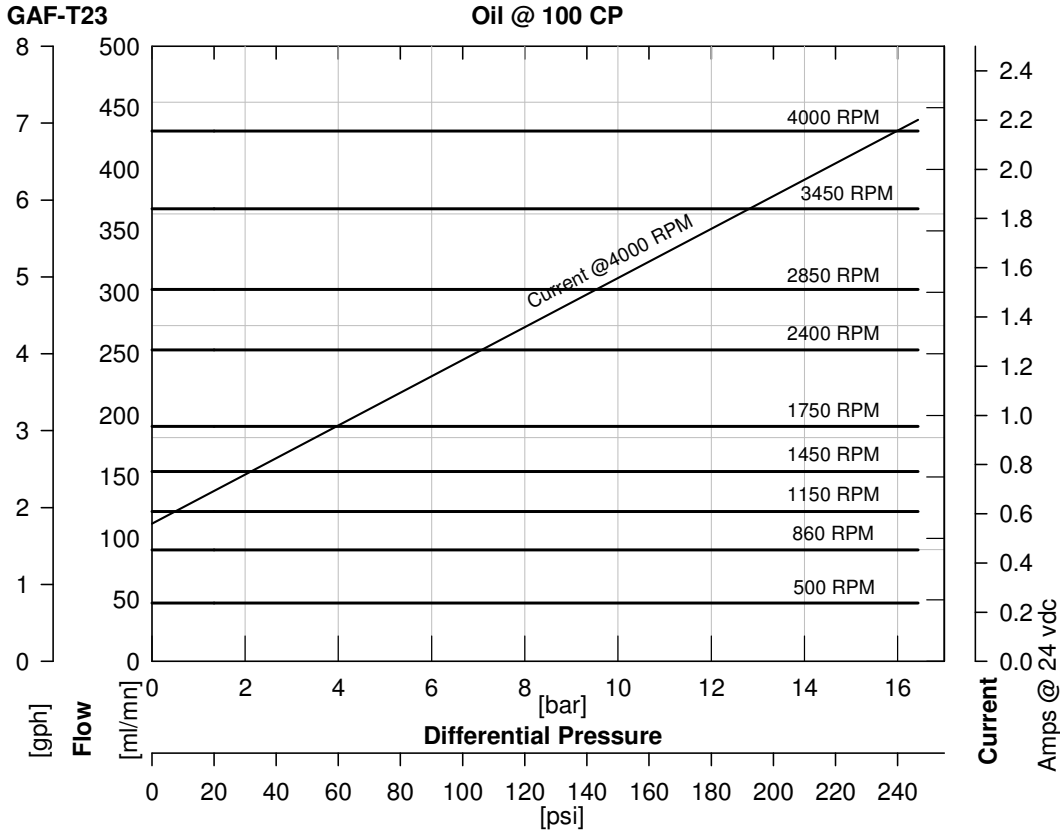
ACTUAL PERFORMANCE MAY VARY - Specifications are subject to change without notice. When multiple specs are noted, the most conservative value applies.

USA: Micropump, Inc • Phone +360.253.2008 • Fax +360.253.2401
 UK: Micropump, Ltd • Phone +44 (1480) 356900 • Fax +44 (1480) 356920
 info.micropump@idexcorp.com www.micropump.com

Order Code				Pump Construction			
Base Code		Gear Set		Drive Mount		Options	
G	AF	-	T23	5	6	7	SE
1 2 Model		3 4 Wetted Materials		8		O/C: Pump S/K: Service Kit	



Performance-High Viscosity



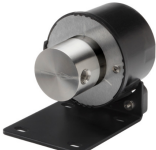
$$\text{Watts} = \frac{\text{Torque [mNm]} \times \text{Speed [RPM]}}{9555}$$

$$\text{HP} = \frac{\text{Torque [oz-in]} \times \text{Speed [RPM]}}{1.008 \times 10^6}$$

To calculate torque, multiply correction factor by torque from viscosity curve above.

ACTUAL PERFORMANCE MAY VARY - Specifications are subject to change without notice. When multiple specs are noted, the most conservative value applies.

USA: Micropump, Inc • Phone +360.253.2008 • Fax +360.253.2401
 UK: Micropump, Ltd • Phone +44 (1480) 356900 • Fax +44 (1480) 356920
 info.micropump@idexcorp.com www.micropump.com

Order Code								Pump Construction			
Base Code		Gear Set		Drive Mount		Options					
G	AF	-	T23	5	6	7	SE				
1	2	3	4	5	6	7	8				
Model				Wetted Materials				O/C: Pump S/K: Service Kit			

Specifications

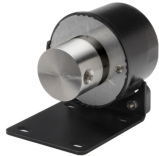
	SI	US
Displacement	0.092 ml/rev	0.02 gal/1000*rev
Max Flow (2 Pole Speed)	270 ml/mn 2850 RPM (50Hz)	5.1 gal/hr 3450 RPM (60Hz)
Max Differential Pressure	17.3 Bar	250 psi
Max System Pressure (MAWP)	21 Bar	300 psi
NIPR (Absolute)	180 mBar	2.5 psia
Wet Lift (Typical)	51 cm.H ₂ O (1450 RPM)	24 in.H ₂ O (1750 RPM)
Temp Range	-46/177 °C	-50/350 °F
Viscosity Range	0.2 to 1500 cp	0.2 to 1500 cp

Notes

- 1 Priming ability varies with operating conditions.

ACTUAL PERFORMANCE MAY VARY - Specifications are subject to change without notice. When multiple specs are noted, the most conservative value applies.

USA: Micropump, Inc • Phone +360.253.2008 • Fax +360.253.2401
UK: Micropump, Ltd • Phone +44 (1480) 356900 • Fax +44 (1480) 356920
info.micropump@idexcorp.com www.micropump.com

<p>Order Code</p> <table style="width:100%; border-collapse: collapse;"> <tr> <td style="width:15%;">Base Code</td> <td style="width:15%; text-align: center;">Gear Set</td> <td style="width:15%;"></td> <td style="width:15%; text-align: center;">Drive Mount</td> <td style="width:15%;"></td> <td style="width:15%;">Options</td> </tr> <tr> <td style="border: 1px solid black; text-align: center;">G</td> <td style="border: 1px solid black; text-align: center;">AF</td> <td style="border: 1px solid black; text-align: center;">-</td> <td style="border: 1px solid black; text-align: center;">T23</td> <td style="border: 1px solid black; text-align: center;">SE</td> <td style="border: 1px solid black;"></td> </tr> <tr> <td style="text-align: center;">1</td> <td style="text-align: center;">2</td> <td style="text-align: center;">3</td> <td style="text-align: center;">4</td> <td style="text-align: center;">5</td> <td style="text-align: center;">6</td> </tr> <tr> <td colspan="3" style="text-align: center;">Model</td> <td colspan="3" style="text-align: center;">Wetted Materials</td> </tr> </table> <p style="font-size: small;">O/C: Pump S/K: Service Kit</p>	Base Code	Gear Set		Drive Mount		Options	G	AF	-	T23	SE		1	2	3	4	5	6	Model			Wetted Materials			<p>Pump Construction</p> <div style="text-align: right;">  </div>
Base Code	Gear Set		Drive Mount		Options																				
G	AF	-	T23	SE																					
1	2	3	4	5	6																				
Model			Wetted Materials																						

Product Options

Base Code Select a code character for each numbered position to configure the product.

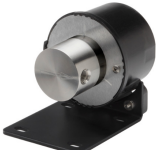
1	Code	Product Type	Specifications	Notes
	G	Gear Pump		
2	AF	Series GAF	Max System Pressure (MAWP) 21 Bar (300 psi)	Ports 1/8-27 (F) NPT Side Ports
4	T23	Gear Set (Width/N°Gears/Pitch) 0.125/2/40 (Hex Drive - Use P or J)	Displacement 0.092 ml/rev (0.02 gal/1000*rev)	Max Differential Pressure 17.3 Bar (250 psi)
5	J	Gear Material PEEK (carbon fiber/ptfe)	Max Differential Pressure	Driven Magnet (Standard) Neodymium (NdFeB)
6	D	Static Seals EP		Temp Range
7	S	Base Materials SS316		

Options Add Option codes after the Base Code to modify features or enhance the product.

Notes

ACTUAL PERFORMANCE MAY VARY - Specifications are subject to change without notice. When multiple specs are noted, the most conservative value applies.

USA: Micropump, Inc • Phone +360.253.2008 • Fax +360.253.2401
 UK: Micropump, Ltd • Phone +44 (1480) 356900 • Fax +44 (1480) 356920
 info.micropump@idexcorp.com www.micropump.com

Order Code								Pump Construction
Base Code		Gear Set		Drive Mount		Options		
G	AF	-	T23			SE		
1	2	3	4	5	6	7	8	
Model				Wetted Materials				O/C: Pump S/K: Service Kit

Dimensions

ACTUAL PERFORMANCE MAY VARY - Specifications are subject to change without notice. When multiple specs are noted, the most conservative value applies.

USA: Micropump, Inc • Phone +360.253.2008 • Fax +360.253.2401
 UK: Micropump, Ltd • Phone +44 (1480) 356900 • Fax +44 (1480) 356920
 info.micropump@idexcorp.com www.micropump.com